

COOK'S TORCH WITH GAS

OWNER'S MANUAL

THE GAS TORCH DOES NOT CONTAIN ANY BUTANE GAS WHEN FIRST PURCHASED.

Read these instructions carefully and familiarise yourself with the product before lighting or using. Re-read the instructions periodically to refresh your memory. Retain these instructions for future use.

FILLING THE TORCH

- Use only butane fuel.
- Fill only outdoors in a well ventilated area.
- Make sure the ON/OFF valve is in the OFF position. (Fig 4). Turn clockwise until it stops.
- Remove base and turn the unit upside down and insert fill stem into fill valve and press down for 3 to 4 seconds, repeat three times. Back spray from fill valve indicates that appliance is full. (Fig 1)
- Do not add attachments to the end of the gas refill canister as the valve is designed to accept the gas direct from the gas can without any adaptors added (these adaptors are only usually provided for cigarette lighters).

LIGHTING THE TORCH

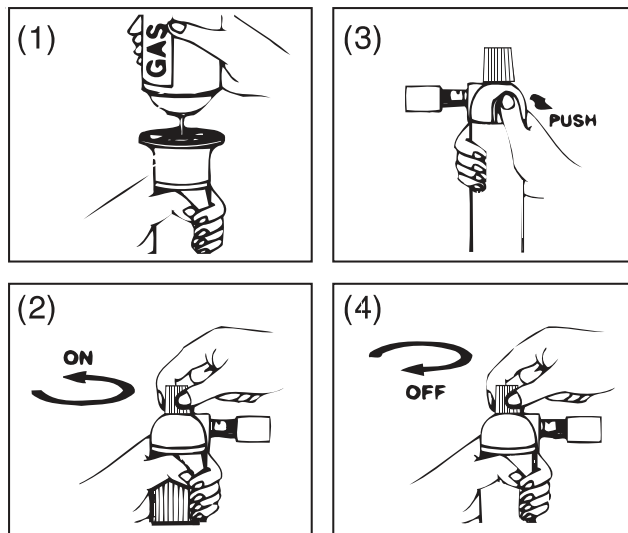
- Turn the ON/OFF knob 2/3 turn clockwise. Gas will blow out of the burner with a hiss. (Fig 2)
- Push the ignition button. The flame will ignite instantly. (Fig 3)
- If torch does not light, then press igniter button again. If torch still does not light, check and make sure that the air control collar is not covering the vent hole. Turn off the ON/OFF valve (turn ON/OFF valve clockwise until it stops). Hold torch at an angle so that you can see inside the front of the burner. With the fuel shut off, press the ignition button, a spark should jump from the ignition pin to the inner face of the burner. Do not press the ignition button with burner pointed toward yourself or anything flammable. If spark jumps, repeat lighting procedure. If torch still does not light, try lighting after turning on 1/2 and 2/8 turn.

FLAME ADJUSTMENT

- Adjust the torch flame to 1.5cm to 2.5cm for efficient fuel use.
- Cooler flames may be achieved by adjusting the air collar until the flame softens. Do not do this while operating as the air control collar gets hot.

SHUT DOWN

- Turn ON/OFF valve clockwise until it stops. Be sure flame is out and torch is cool before storing torch.



WARNING

1. DO NOT TOUCH FLAME GUARD OR AIR CONTROL COLLAR WHILST IN USE OR SOON AFTER AS IT WILL BE HOT.
2. KEEP OUT OF REACH OF CHILDREN.
3. BUTANE GAS IS EXTREMELY FLAMMABLE, PLEASE HANDLE WITH CARE.
4. ALWAYS POINT AWAY FROM EYES AND BODY WHEN IGNITING OR OPERATING.
5. DO NOT STORE IN DIRECT SUNLIGHT OR ANY PLACE WHERE TEMPERATURES WILL EXCEED 40°C.
6. MAKE SURE THE ADJUSTMENT KNOB IS FIRMLY CLOSED AND THE FLAME IS COMPLETELY EXTINGUISHED AFTER USING.
7. DO NOT CONTINUALLY USE THIS TOOL FOR LONGER THAN ONE HOUR.
8. AFTER USING, LET THE TOOL COOL DOWN BEFORE STORAGE.
9. DO NOT PUNCTURE OR DISPOSE OF IN A FIRE.
10. READ AND FOLLOW ALL INSTRUCTIONS AND CAUTIONS ON THE FUEL CANISTER.

OWNER'S MANUAL

